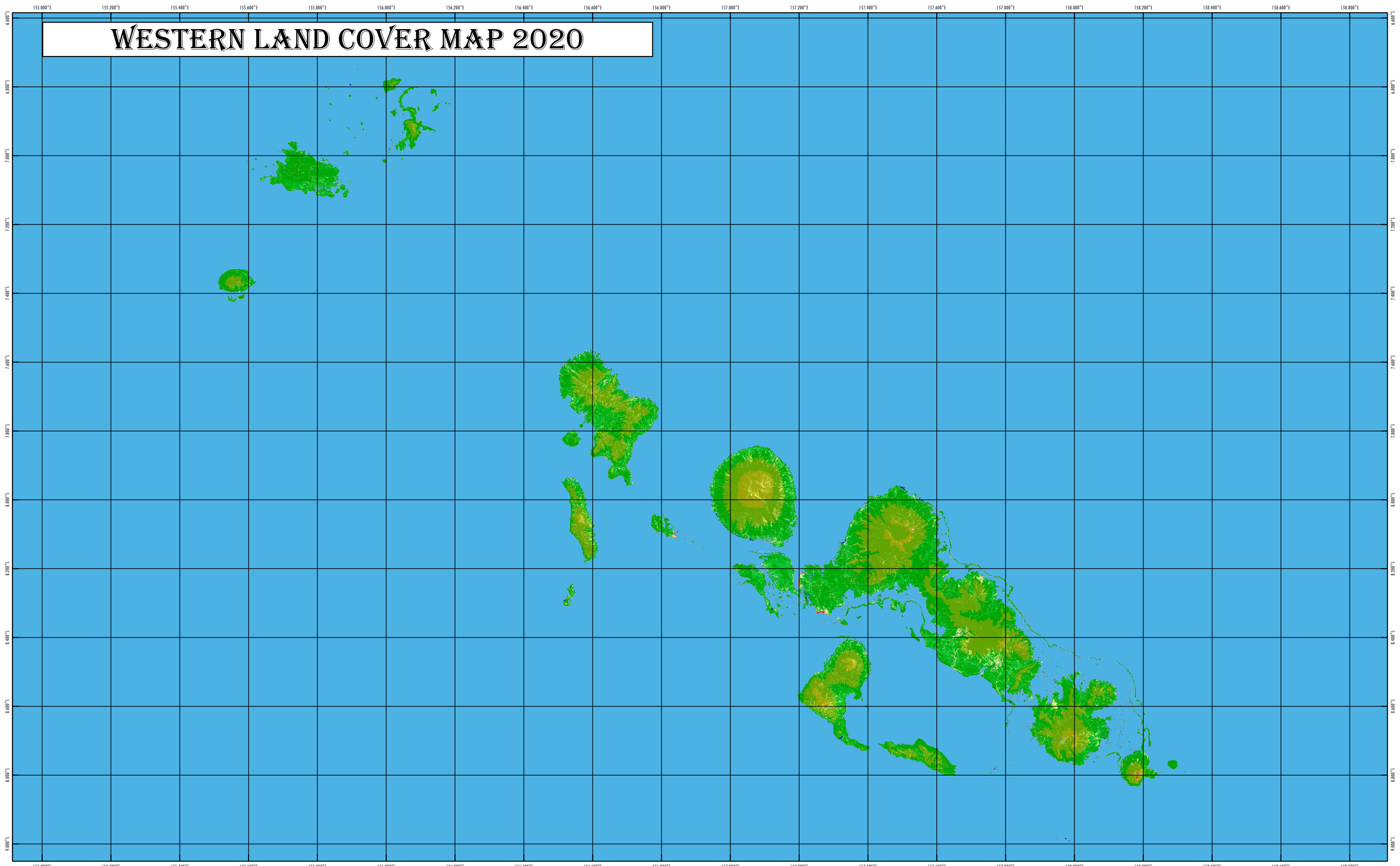


# WESTERN LAND COVER MAP 2020



## LAND COVER MAP 2020 OF SOLOMON ISLANDS

Land Cover Map 2020 is derived on mosaic Landsat 8 imagery, from 2015 to 2019 at 30m pixel/resolution imagery. Ministry of Forest and Research created the map in collaboration with FAO and JICA in 2021. Classification has done by Random Forest Methodology using Sepal with SRTM and JRC global surface water as auxiliary sources.

Copyright © 2021 Ministry of Forestry and Research, Solomon Islands  
 Projection Latitude/ Longitude, Datum WGS84, Scale 1:600,000

### Land Cover Type

- |   |   |  |
|---|---|--|
|  Lowland forest Primary  |  Montane forest Degraded |  Otherland        |
|  Lowland forest Degraded |  Mangrove                |  Grassland        |
|  Hill forest Primary     |  Swamp riverrine forest  |  Crop subsistence |
|  Hill forest Degraded    |  Forest plantation       |  Crop Palm        |
|  Montane forest Primary  |  Water                   |  Crop Coconut     |
|   |  Settlement              |  |



Solomon Islands  
 Government

Ministry of Forestry and Research



0 10 20 km

